

## Illuminated Push Buttons, Selector & Key Switches (Type RP2-B)

### Operating Heads for Key Switches - IP65



RP2-BG2

Description	Type	Key removal	Reference
2 Position	Stay Put	LH Position	RP2-BG2
		RH Position	RP2-BG02
		All Positions	RP2-BG4
3 Position	Stay Put	Centre Position	RP2-BG3
		LH and RH Position	RP2-BG5
		All 3 Positions	RP2-BG0
		RH Position	RP2-BG09
		LH Position	RP2-BG9
		Both Side Spring Return To Centre	Centre Position
	Stay Put To Left Spring Return From Right To Centre	Centre Position	RP2-BG8

### Operating Heads for Illuminated Push Buttons - IP65



RP2-BW35



RP2-BW14



RP2-BW16

Description	Application	Colour	Reference
Flush Push Button Spring Return	For Incandescent Bulbs	○ White	RP2-BW31
		● Green	RP2-BW33
		● Red	RP2-BW34
		● Amber	RP2-BW35
		● Blue	RP2-BW36
		○ Clear	RP2-BW37
		Projecting Push Button Spring Return	For Incandescent Bulbs
● Green	RP2-BW13		
● Red	RP2-BW14		
● Amber	RP2-BW15		
● Blue	RP2-BW16		
○ Clear	RP2-BW17		
Flush Push Button Spring Return	For LED		
		● Green	RP2-BWL33
		● Red	RP2-BWL34
		● Amber	RP2-BWL35
		● Blue	RP2-BWL36
		○ Clear	RP2-BWL37
		● Yellow	RP2-BWL38
		Projecting Push Button Spring Return	For LED
● Green	RP2-BWL13		
● Red	RP2-BWL14		
● Amber	RP2-BWL15		
● Blue	RP2-BWL16		
○ Clear	RP2-BWL17		
● Yellow	RP2-BWL18		
Booted Type Flush Push Button Illuminated Type	For Incandescent Bulbs		
		● Green	RP2-BW53
		● Red	RP2-BW54
		● Amber	RP2-BW55
		● Blue	RP2-BW56
		○ Clear	RP2-BW57

- For legend plates refer page F20

- For body / contact assemblies refer page F17, F18 & F19

- For accessories refer page F19 & F20

- For complete assemblies refer page F21 & F22

# Control & Signalling Units $\phi$ 22.5mm Plastic

## Characteristics

### General Characteristics

Products	Push Buttons, Selector Switches, Key Selector Switches, Latching Mushroom Head Push Buttons, Pilot Lights & Illuminated Push Buttons
Reference Standard	IEC 60947-5-1, EN 60947-5-1, IEC 337-1, UL 508, CSA C-22-2 n° 14
Approval	UL*
Protection Degree	IP 65 / IP 66 according to IEC 60947-1;
Pollution Degree	3
Temperature	-40°C ~ + 70°C (Storage) -25°C ~ + 70°C (Working)
Vibration Resistance	$\varnothing$ 60mm Mushroom Head Push Buttons: 8g, Other Push Buttons & Pilot Lights: 15g (40Hz<frequency<500 Hz) conforming to IEC 68-2-6
Shock Resistance	Push Buttons : 70g, Mushroom Head Push Buttons: 15g, Selector Switches : 200g conforming to IEC 68-2-27
Working Position	All working positions are allowed
Mechanical Life Push Buttons	Push Buttons & Selector Switches 1 million operations, Latching Emergency Mushroom 300,000 operations

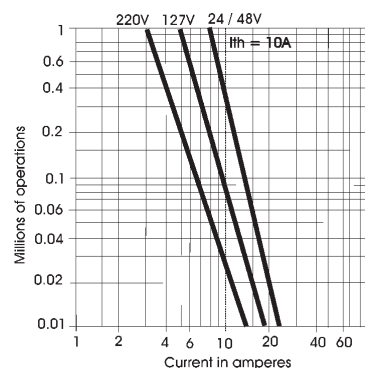
### Contact Elements Characteristics

Rated Thermal Current $I_{th}$	10A
Rated Insulation Voltage $U_i$	500V conforming to IEC 60947-1, UL 508 & CSA 22-2 n° 14
Insulation Category	Group C conforming to NF C 20-040, VDE 0110
Operating Force	Push Buttons - 1 'NO' = 10N, 1 'NC' = 8N Additional contacts - 'NO' = +5N, 'NC' = +3N
Dielectric Strength	2.5KV for 1 minute
Insulation Resistance	2M Ohm min (500 VDC)
Initial Contact Resistance	< 25 milli Ohm
Short Circuits Protection	10A 500V, Cartridge Fuse g1 or N conforming to IEC 337-1
Cabling/Terminal Capacity	1x0.5mm <sup>2</sup> ...2x1.5mm <sup>2</sup>
Contact Operation	Slow action, Positive Opening
Rated Power	Conforming to IEC 60947-5-1; utilization categories AC 15 & DC 13

### Standard Contact Blocks

AC Supply (50/60Hz)

$\infty$  Inductive



### DC Supply

Power broken in W

For 1 million operations

<b>Voltage</b>	24V	48V	120V
<b>Inductive Load</b>	65W	48W	40W

### AC Ratings, Inductive - NEMA A600

35% Power Factor

Volts	Make Amperes	VA	Break Amperes	VA	Continuous carrying Amperes	Resistive 75% Power factor Make, Break & continuous Amperes
120	60	7200	6	720	10	10
240	30	7200	3	720	10	10
480	15	7200	1.5	720	10	10
600	12	7200	1.2	720	10	10

### DC Ratings, NEMA Type Q600

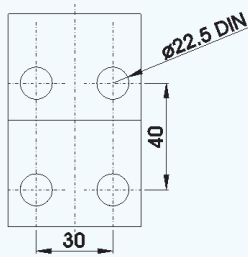
Inductive and resistive

Volts	Make & Break (Amp.)	Continuous (Amp.)
125	0.55	2.5
250	0.27	2.5
600	0.10	2.5

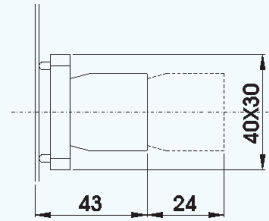
\* Under Approval

# Control & Signalling Units $\phi$ 22.5mm Plastic

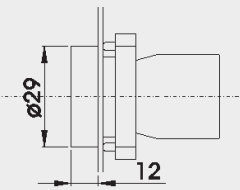
## Dimensions / Complete Units' Reference



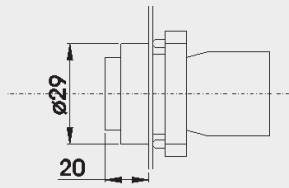
PANEL CUT-OUT  
(Thickness: 6mm max.)



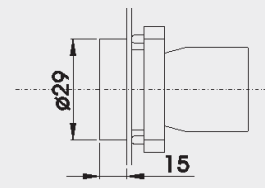
RB2-BE10+RP2-B = RCP2-BZ10



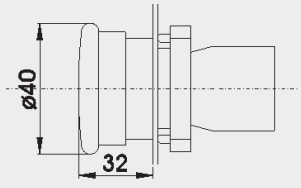
RP2-BA+RP2-BZ10=RCP2-BA  
RP2-BA334+RP2-BZ10=RCP2-BA334



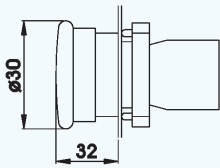
RP2-BL+RP2-BZ10=RCP2-BL



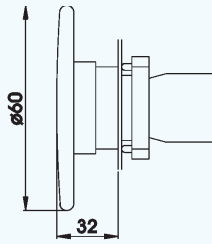
RP2-BA8+RP2-BZ10=RCP2-BA8



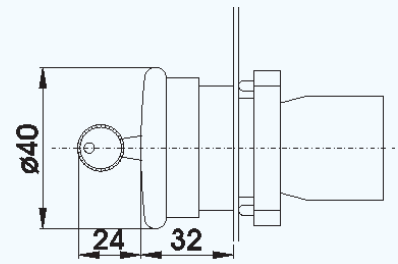
RP2-BC+RP2-BZ10=RCP2-BC  
RP2-BS54+RP2-BZ10=RCP2-BS54



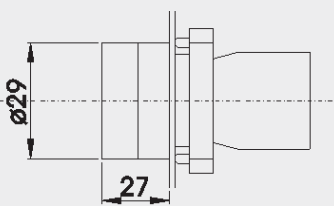
RP2-BS44+RP2-BZ10=RCP2-BS44



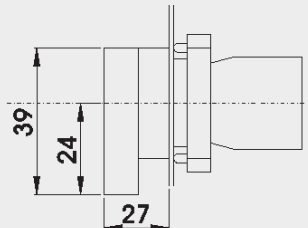
RP2-BR4+RP2-BZ10=RCP2-BR4  
RP2-BS64+RP2-BZ10=RCP2-BS64



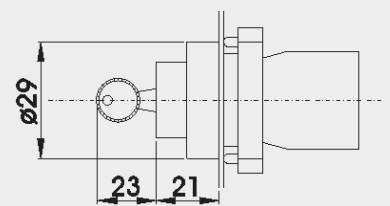
RP2-BS14+RP2-BZ10=RCP2-BS14



RP2-BD2+RP2-BZ10=RCP2-BD2  
RP2-BD3+RP2-BZ10=RCP2-BD3



RP2-BJ2+RP2-BZ10=RCP2-BJ2  
RP2-BJ3+RP2-BZ10=RCP2-BJ3

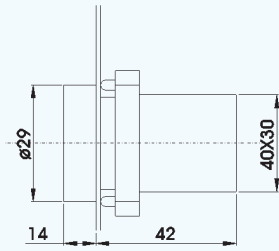


RP2-BG+RP2-BZ10=RCP2-BG  
(Replace  $\diamond$  with code for position of Key removal & operation pattern)

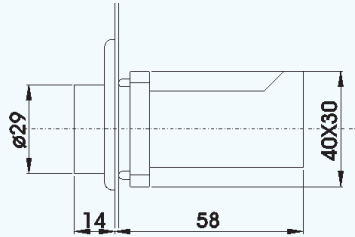
- Replace  $\diamond$  with codes for type of contacts (See page F18) &  $\bullet$  with colour codes (See page F15 & F16)
- For non-illuminated push button heads, selector switches & key switches, refer page F15 & F16

# Control & Signalling Units $\phi$ 22.5mm Plastic

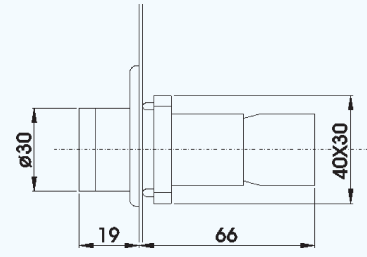
## Dimensions / Complete Units' Reference



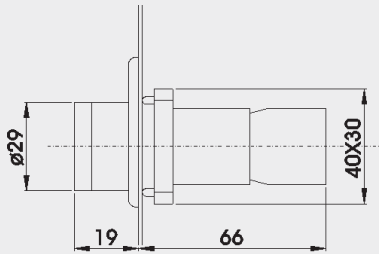
RP2-BV0●+RP2-BV6 = RCP2-BV6●  
 RP2-BV0●+RP2-BVN6 = RCP2-BVN6●  
 RP2-BV0●+RP2-BV7 = RCP2-BV7●  
 RP2-BV0●+RP2-BVD7 = RCP2-BVD7●  
 RP2-BVL0●+RP2-BVL7● = RCP2-BVL7●



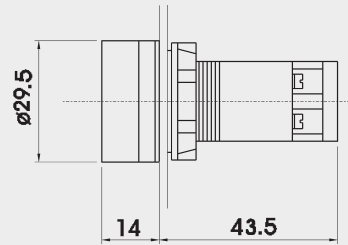
RP2-BV0●+RP2-BV3 = RCP2-BV3●  
 RP2-BV0●+RP2-BV4 = RCP2-BV4●



RP2-BW5●+RP2-BW06+RB2-BE10❖ = RCP2-BW5●6❖  
 RP2-BW5●+RP2-BW07+RB2-BE10❖ = RCP2-BW5●7❖  
 RP2-BW5●+RP2-BWD07+RB2-BE10❖ = RCP2-BWD5●7❖  
 RP2-BW5●+RP2-BW06+RB2-BE10❖ = RCP2-BW5●6❖



RP2-BW3●+RP2-BW06+RB2-BE10❖ = RCP2-BW3●6❖  
 RP2-BW3●+RP2-BW07+RB2-BE10❖ = RCP2-BW3●7❖  
 RP2-BW3●+RP2-BWD07+RB2-BE10❖ = RCP2-BWD3●7❖  
 RP2-BWL3●+RP2-BWN06●+RB2-BE10❖ = RCP2-BWN3●6❖  
 RP2-BWL3●+RP2-BWL7●+RB2-BE10❖ = RCP2-BWL3●7❖  
 RP2-BW1●+RP2-BW06+RB2-BE10❖ = RCP2-BW1●6❖  
 RP2-BW1●+RP2-BW07+RB2-BE10❖ = RCP2-BW1●7❖  
 RP2-BW1●+RP2-BWD07+RB2-BE10❖ = RCP2-BWD1●7❖  
 RP2-BWL1●+RP2-BWN06●+RB2-BE10❖ = RCP2-BWN3●6❖  
 RP2-BWL1●+RP2-BWL7●+RB2-BE10❖ = RCP2-BWL3●7❖



RCP7-IVL-7●

- Replace '❖' with codes for type of contacts (See page F-18) & '●' with colour codes (See page F-16 & F-17)
- For illuminated push button heads, refer page F-16
- For pilot lamp head, refer page F-17