

Control & Signalling Units ϕ 22.5mm Plastic

Non-Illuminated Push Buttons, Selector Switches (Type RP2-B)



RP2-BA3



RP2-BL6



RP2-BA48



RP2-BC2



RP2-BA26



RP2-BD2

Operating Heads for Push Buttons, Spring Return - IP65 (also for use with RC●P/RC●M type Control Stations)

Description	Knob Size	Colour	
Flush Push Button Spring Return		○ White	RP2-BA1
		● Black	RP2-BA2
		● Green	RP2-BA3
		● Red	RP2-BA4
		● Yellow	RP2-BA5
		● Blue	RP2-BA6
		↑ Black arrow on White base	RP2-BA334
		⬇ White arrow on Black base	RP2-BA335
Projecting Push Button Spring Return		○ White	RP2-BL1
		● Black	RP2-BL2
		● Green	RP2-BL3
		● Red	RP2-BL4
		● Yellow	RP2-BL5
		● Blue	RP2-BL6
Flush Push Button Spring Return with Transparent Boot IP66		○ White	RP2-BA18
		● Black	RP2-BA28
		● Green	RP2-BA38
		● Red	RP2-BA48
		● Yellow	RP2-BA58
		● Blue	RP2-BA68
Mushroom Head Push Button Spring Return	ϕ 40mm ϕ 60mm	● Black	RP2-BC2
		● Green	RP2-BC3
		● Red	RP2-BC4
		● Yellow	RP2-BC5
		● Blue	RP2-BC6
		● Red	RP2-BR4
Mushroom Head Push Button Turn to Release	ϕ 30mm ϕ 40mm ϕ 60mm	● Red	RP2-BS44
		● Red	RP2-BS54
		● Red	RP2-BS64
Mushroom Head Pushbutton Key Release - Key No. 455	ϕ 40mm	● Red	RP2-BS14
Recess (Guarded) Push Button		○ White	RP2-BA16
		● Black	RP2-BA26
		● Green	RP2-BA36
		● Red	RP2-BA46
		● Yellow	RP2-BA56
		● Blue	RP2-BA66

Operating Heads for Selector Switches - IP65 (also for use with RC●P/RC●M type Control Stations)

Description	Type	Operator	Reference
2 Position	Stay Put	Standard Handle	RP2-BD2
		Long Handle	RP2-BJ2
3 Position	Stay Put	Standard Handle	RP2-BD3
		Long Handle	RP2-BJ3
	Spring Return	Standard Handle	RP2-BDR3
		Long Handle	RP2-BJR3
	1 Spring Return Right to Centre	Standard Handle	RP2-BD8
		Long Handle	RP2-BJ8
	1 Spring Return Left to Centre	Standard Handle	RP2-BD7
	Long Handle	RP2-BJ7	

- For legend plates refer page F20
- For accessories refer page F19 & F20
- For body / contact assemblies refer page F17, F18 & F19
- For complete assemblies refer page F21 & F22

Control & Signalling Units ϕ 22.5mm Plastic

Characteristics

General Characteristics

Products	Push Buttons, Selector Switches, Key Selector Switches, Latching Mushroom Head Push Buttons, Pilot Lights & Illuminated Push Buttons
Reference Standard	IEC 60947-5-1, EN 60947-5-1, IEC 337-1, UL 508, CSA C-22-2 n° 14
Approval	UL*
Protection Degree	IP 65 / IP 66 according to IEC 60947-1;
Pollution Degree	3
Temperature	-40°C ~ + 70°C (Storage) -25°C ~ + 70°C (Working)
Vibration Resistance	\varnothing 60mm Mushroom Head Push Buttons: 8g, Other Push Buttons & Pilot Lights: 15g (40Hz<frequency<500 Hz) conforming to IEC 68-2-6
Shock Resistance	Push Buttons : 70g, Mushroom Head Push Buttons: 15g, Selector Switches : 200g conforming to IEC 68-2-27
Working Position	All working positions are allowed
Mechanical Life Push Buttons	Push Buttons & Selector Switches 1 million operations, Latching Emergency Mushroom 300,000 operations

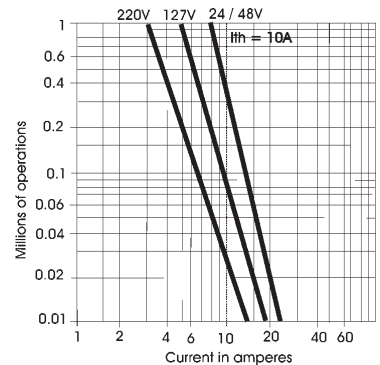
Contact Elements Characteristics

Rated Thermal Current I_{th}	10A
Rated Insulation Voltage U_i	500V conforming to IEC 60947-1, UL 508 & CSA 22-2 n° 14
Insulation Category	Group C conforming to NF C 20-040, VDE 0110
Operating Force	Push Buttons - 1 'NO' = 10N, 1 'NC' = 8N Additional contacts - 'NO' = +5N, 'NC' = +3N
Dielectric Strength	2.5KV for 1 minute
Insulation Resistance	2M Ohm min (500 VDC)
Initial Contact Resistance	< 25 milli Ohm
Short Circuits Protection	10A 500V, Cartridge Fuse g1 or N conforming to IEC 337-1
Cabling/Terminal Capacity	1x0.5mm ² ...2x1.5mm ²
Contact Operation	Slow action, Positive Opening
Rated Power	Conforming to IEC 60947-5-1; utilization categories AC 15 & DC 13

Standard Contact Blocks

AC Supply (50/60Hz)

∞ Inductive



DC Supply

Power broken in W

For 1 million operations

Voltage	24V	48V	120V
Inductive Load	65W	48W	40W

AC Ratings, Inductive - NEMA A600

35% Power Factor

Volts	Make Amperes	VA	Break Amperes	VA	Continuous carrying Amperes	Resistive 75% Power factor Make, Break & continuous Amperes
120	60	7200	6	720	10	10
240	30	7200	3	720	10	10
480	15	7200	1.5	720	10	10
600	12	7200	1.2	720	10	10

DC Ratings, NEMA Type Q600

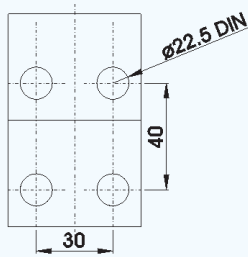
Inductive and resistive

Volts	Make & Break (Amp.)	Continuous (Amp.)
125	0.55	2.5
250	0.27	2.5
600	0.10	2.5

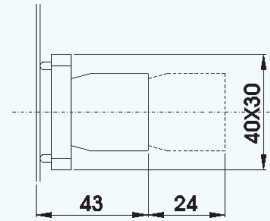
* Under Approval

Control & Signalling Units ϕ 22.5mm Plastic

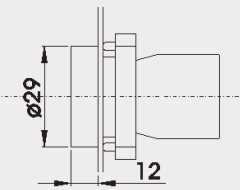
Dimensions / Complete Units' Reference



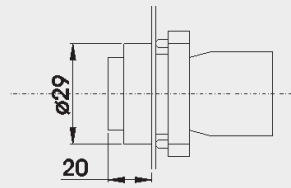
PANEL CUT-OUT
(Thickness: 6mm max.)



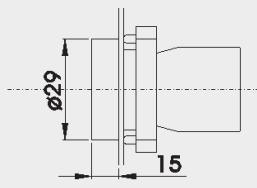
RB2-BE10+RP2-B = RCP2-BZ10



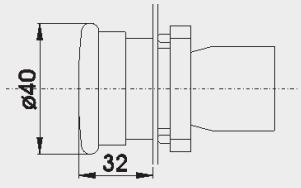
RP2-BA+RP2-BZ10=RCP2-BA
RP2-BA334+RP2-BZ10=RCP2-BA334



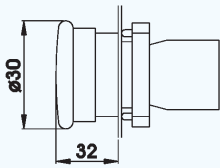
RP2-BL+RP2-BZ10=RCP2-BL



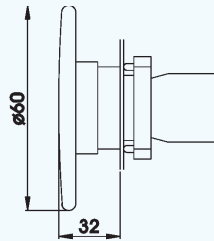
RP2-BA8+RP2-BZ10=RCP2-BA8



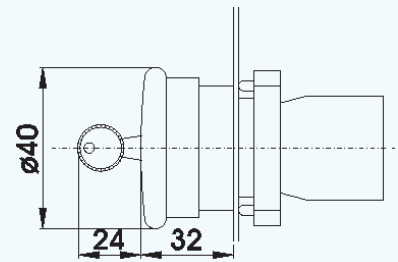
RP2-BC+RP2-BZ10=RCP2-BC
RP2-BS54+RP2-BZ10=RCP2-BS54



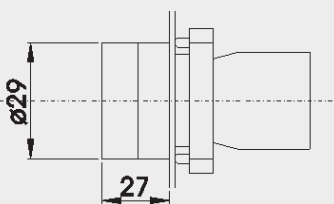
RP2-BS44+RP2-BZ10=RCP2-BS44



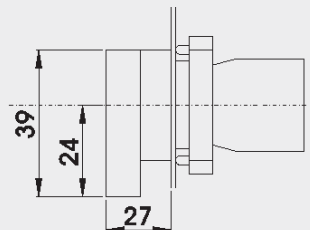
RP2-BR4+RP2-BZ10=RCP2-BR4
RP2-BS64+RP2-BZ10=RCP2-BS64



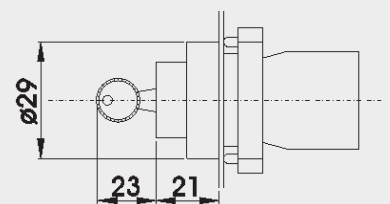
RP2-BS14+RP2-BZ10=RCP2-BS14



RP2-BD2+RP2-BZ10=RCP2-BD2
RP2-BD3+RP2-BZ10=RCP2-BD3



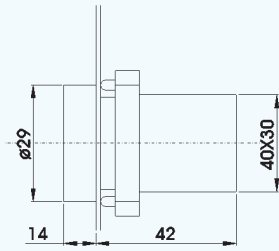
RP2-BJ2+RP2-BZ10=RCP2-BJ2
RP2-BJ3+RP2-BZ10=RCP2-BJ3



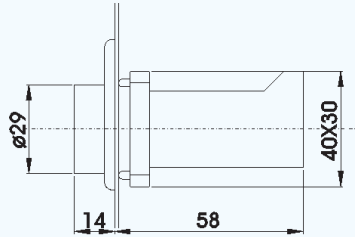
RP2-BG+RP2-BZ10=RCP2-BG
(Replace \diamond with code for position of Key removal & operation pattern)

- Replace \diamond with codes for type of contacts (See page F18) & \bullet with colour codes (See page F15 & F16)
- For non-illuminated push button heads, selector switches & key switches, refer page F15 & F16

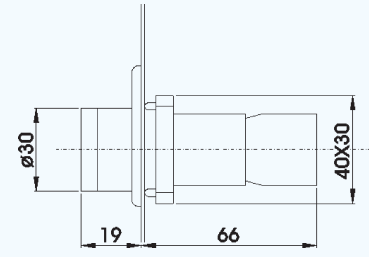
Dimensions / Complete Units' Reference



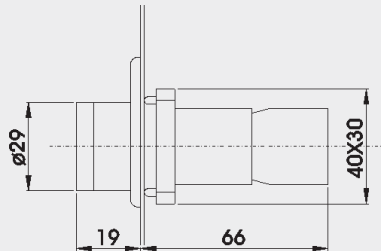
RP2-BV0●+RP2-BV6 = RCP2-BV6●
 RP2-BV0●+RP2-BVN6 = RCP2-BVN6●
 RP2-BV0●+RP2-BV7 = RCP2-BV7●
 RP2-BV0●+RP2-BVD7 = RCP2-BVD7●
 RP2-BVL0●+RP2-BVL7● = RCP2-BVL7●



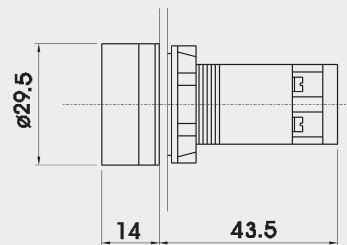
RP2-BV0●+RP2-BV3 = RCP2-BV3●
 RP2-BV0●+RP2-BV4 = RCP2-BV4●



RP2-BW5●+RP2-BW06+RB2-BE10❖ = RCP2-BW5●6❖
 RP2-BW5●+RP2-BW07+RB2-BE10❖ = RCP2-BW5●7❖
 RP2-BW5●+RP2-BWD07+RB2-BE10❖ = RCP2-BWD5●7❖
 RP2-BW5●+RP2-BW06+RB2-BE10❖ = RCP2-BW5●6❖



RP2-BW3●+RP2-BW06+RB2-BE10❖ = RCP2-BW3●6❖
 RP2-BW3●+RP2-BW07+RB2-BE10❖ = RCP2-BW3●7❖
 RP2-BW3●+RP2-BWD07+RB2-BE10❖ = RCP2-BWD3●7❖
 RP2-BWL3●+RP2-BWN06●+RB2-BE10❖ = RCP2-BWN3●6❖
 RP2-BWL3●+RP2-BWL7●+RB2-BE10❖ = RCP2-BWL3●7❖
 RP2-BW1●+RP2-BW06+RB2-BE10❖ = RCP2-BW1●6❖
 RP2-BW1●+RP2-BW07+RB2-BE10❖ = RCP2-BW1●7❖
 RP2-BW1●+RP2-BWD07+RB2-BE10❖ = RCP2-BWD1●7❖
 RP2-BWL1●+RP2-BWN06●+RB2-BE10❖ = RCP2-BWN3●6❖
 RP2-BWL1●+RP2-BWL7●+RB2-BE10❖ = RCP2-BWL3●7❖



RCP7-IVL-7●

- Replace '❖' with codes for type of contacts (See page F-18) & '●' with colour codes (See page F-16 & F-17)
- For illuminated push button heads, refer page F-16
- For pilot lamp head, refer page F-17