

Pilot Light Heads & Bodies (Type RP2-B)



RP2-BV03



RP2-BV05



RP2-BV6



RCB7-IVL-73

Pilot Light Heads

Description	Colour	Reference
For Incandescent Bulbs	○ White	RP2-BV01
	● Green	RP2-BV03
	● Red	RP2-BV04
	● Amber	RP2-BV05
	● Blue	RP2-BV06
	○ Clear	RP2-BV07
	High Contrast, for use With Neon Bulbs** or LEDs	○ White
● Green		RP2-BVL03
● Red		RP2-BVL04
● Amber		RP2-BVL05
● Blue		RP2-BVL06
○ Clear		RP2-BVL07
● Yellow		RP2-BVL08

Complete Pilot Light Bodies

Description	Supply voltage	Colour	Reference
Direct BA 9s Filament Bulb* Supplied	12V / 24V / 48V / 110V / 130V (AC)(DC) ○	-	RP2-BV6 ■
Through Resistor BA 9s, 130V Filament Bulb Supplied	240V (AC)(DC)	-	RP2-BV7
Through Resistor & Diode BA 9s, 130V Filament Bulb Supplied	240V (AC)	-	RP2-BVD7
Via Integral Transformer 1.2VA BA 9s, 6V Filament Bulb Supplied	110V / 6V (AC)	-	RP2-BV3
	220V-240V / 6V (AC)	-	RP2-BV4
Direct BA 9s, Neon Bulb Supplied	220V / 380V / 415V (AC)(DC)	● Green	RP2-BVN63 ■
		● Red	RP2-BVN64 ■
		● Amber	RP2-BVN65 ■
Integral Circuit & Cluster LED	12V, 24V, 48V (AC)(DC) 110VAC, 110VDC 220V (DC) 240V (AC)	○ White	RP2-BVL71 ■
		● Green	RP2-BVL73 ■
		● Red	RP2-BVL74 ■
		● Amber	RP2-BVL75 ■
		● Blue	RP2-BVL76 ■
		○ Clear	RP2-BVL77 ■
		● Yellow	RP2-BVL78 ■

Integrated LED Pilot Lamps (Barrel Type LEDs) ♦

Description	Supply voltage	Colour	Reference
Integrated LED Pilot Lamps	12V, 24V, 48V (AC)(DC) 110VAC 110VDC 220VDC 240VAC	○ White	RCB7-IVL-71
		● Green	RCB7-IVL-73
		● Red	RCB7-IVL-74
		● Amber	RCB7-IVL-75
		● Blue	RCB7-IVL-76
		○ Clear	RCB7-IVL-77
		● Yellow	RCB7-IVL-78

- ○ Body assemblies (suitable for bulb 2.6W max.) upto 230V max. available without bulb
- * Bulb rating 12V to 130V, 2.6W (max.)
- ** For Neon bulbs, only Green, Red & Amber is available.
- ■ Please mention voltage while ordering
- For accessories refer page F19 & F20
- For legend plates refer page F20
- For complete assemblies refer page F21 & F22
- ♦ UL approved

Control & Signalling Units ϕ 22.5mm Plastic

Characteristics

General Characteristics

Products	Push Buttons, Selector Switches, Key Selector Switches, Latching Mushroom Head Push Buttons, Pilot Lights & Illuminated Push Buttons
Reference Standard	IEC 60947-5-1, EN 60947-5-1, IEC 337-1, UL 508, CSA C-22-2 n° 14
Approval	UL*
Protection Degree	IP 65 / IP 66 according to IEC 60947-1;
Pollution Degree	3
Temperature	-40°C ~ + 70°C (Storage) -25°C ~ + 70°C (Working)
Vibration Resistance	\varnothing 60mm Mushroom Head Push Buttons: 8g, Other Push Buttons & Pilot Lights: 15g (40Hz<frequency<500 Hz) conforming to IEC 68-2-6
Shock Resistance	Push Buttons : 70g, Mushroom Head Push Buttons: 15g, Selector Switches : 200g conforming to IEC 68-2-27
Working Position	All working positions are allowed
Mechanical Life Push Buttons	Push Buttons & Selector Switches 1 million operations, Latching Emergency Mushroom 300,000 operations

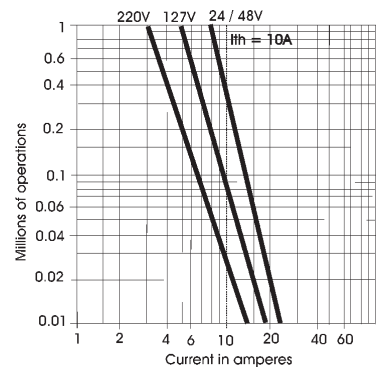
Contact Elements Characteristics

Rated Thermal Current I_{th}	10A
Rated Insulation Voltage U_i	500V conforming to IEC 60947-1, UL 508 & CSA 22-2 n° 14
Insulation Category	Group C conforming to NF C 20-040, VDE 0110
Operating Force	Push Buttons - 1 'NO' = 10N, 1 'NC' = 8N Additional contacts - 'NO' = +5N, 'NC' = +3N
Dielectric Strength	2.5KV for 1 minute
Insulation Resistance	2M Ohm min (500 VDC)
Initial Contact Resistance	< 25 milli Ohm
Short Circuits Protection	10A 500V, Cartridge Fuse g1 or N conforming to IEC 337-1
Cabling/Terminal Capacity	1x0.5mm ² ...2x1.5mm ²
Contact Operation	Slow action, Positive Opening
Rated Power	Conforming to IEC 60947-5-1; utilization categories AC 15 & DC 13

Standard Contact Blocks

AC Supply (50/60Hz)

∞ Inductive



DC Supply

Power broken in W

For 1 million operations

Voltage	24V	48V	120V
Inductive Load	65W	48W	40W

AC Ratings, Inductive - NEMA A600

35% Power Factor

Volts	Make Amperes	VA	Break Amperes	VA	Continuous carrying Amperes	Resistive 75% Power factor Make, Break & continuous Amperes
120	60	7200	6	720	10	10
240	30	7200	3	720	10	10
480	15	7200	1.5	720	10	10
600	12	7200	1.2	720	10	10

DC Ratings, NEMA Type Q600

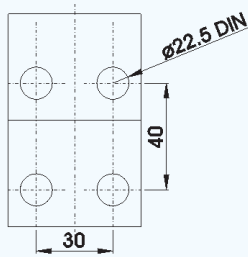
Inductive and resistive

Volts	Make & Break (Amp.)	Continuous (Amp.)
125	0.55	2.5
250	0.27	2.5
600	0.10	2.5

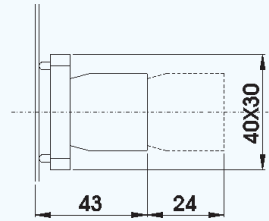
* Under Approval

Control & Signalling Units ϕ 22.5mm Plastic

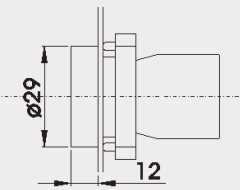
Dimensions / Complete Units' Reference



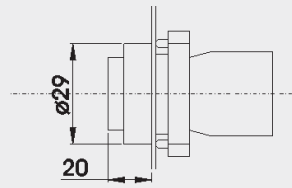
PANEL CUT-OUT
(Thickness: 6mm max.)



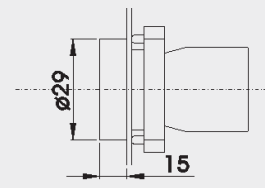
RB2-BE10+RP2-B = RCP2-BZ10



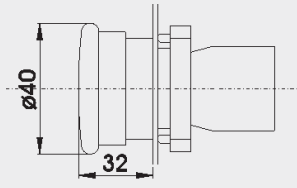
RP2-BA+RP2-BZ10=RCP2-BA
RP2-BA334+RP2-BZ10=RCP2-BA334



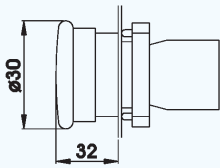
RP2-BL+RP2-BZ10=RCP2-BL



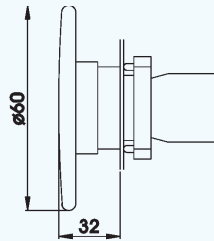
RP2-BA8+RP2-BZ10=RCP2-BA8



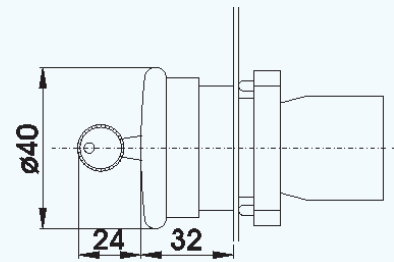
RP2-BC+RP2-BZ10=RCP2-BC
RP2-BS54+RP2-BZ10=RCP2-BS54



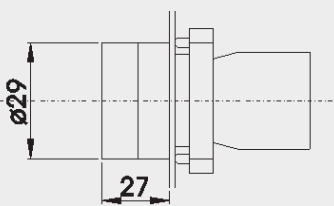
RP2-BS44+RP2-BZ10=RCP2-BS44



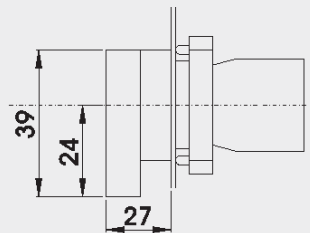
RP2-BR4+RP2-BZ10=RCP2-BR4
RP2-BS64+RP2-BZ10=RCP2-BS64



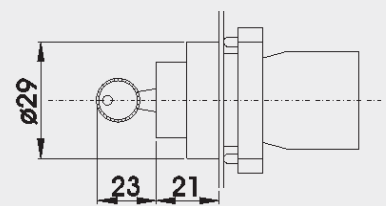
RP2-BS14+RP2-BZ10=RCP2-BS14



RP2-BD2+RP2-BZ10=RCP2-BD2
RP2-BD3+RP2-BZ10=RCP2-BD3



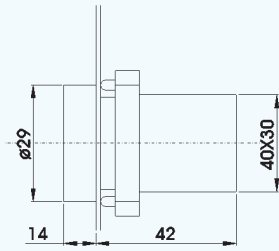
RP2-BJ2+RP2-BZ10=RCP2-BJ2
RP2-BJ3+RP2-BZ10=RCP2-BJ3



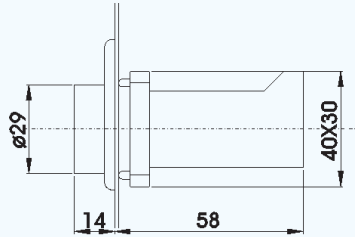
RP2-BG+RP2-BZ10=RCP2-BG
(Replace \diamond with code for position of Key removal & operation pattern)

- Replace \diamond with codes for type of contacts (See page F18) & \bullet with colour codes (See page F15 & F16)
- For non-illuminated push button heads, selector switches & key switches, refer page F15 & F16

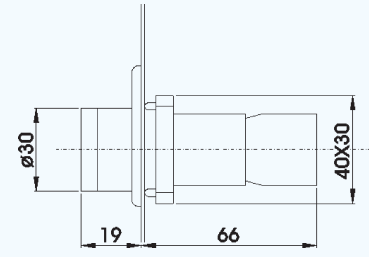
Dimensions / Complete Units' Reference



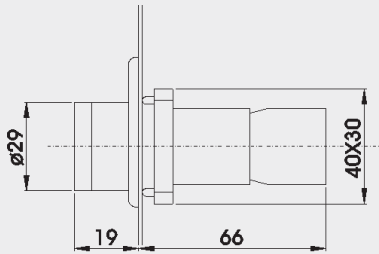
RP2-BV0●+RP2-BV6 = RCP2-BV6●
 RP2-BV0●+RP2-BVN6 = RCP2-BVN6●
 RP2-BV0●+RP2-BV7 = RCP2-BV7●
 RP2-BV0●+RP2-BVD7 = RCP2-BVD7●
 RP2-BVL0●+RP2-BVL7● = RCP2-BVL7●



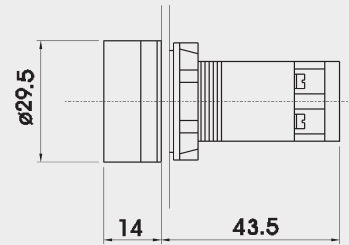
RP2-BV0●+RP2-BV3 = RCP2-BV3●
 RP2-BV0●+RP2-BV4 = RCP2-BV4●



RP2-BW5●+RP2-BW06+RB2-BE10❖ = RCP2-BW5●6❖
 RP2-BW5●+RP2-BW07+RB2-BE10❖ = RCP2-BW5●7❖
 RP2-BW5●+RP2-BWD07+RB2-BE10❖ = RCP2-BWD5●7❖
 RP2-BW5●+RP2-BW06+RB2-BE10❖ = RCP2-BW5●6❖



RP2-BW3●+RP2-BW06+RB2-BE10❖ = RCP2-BW3●6❖
 RP2-BW3●+RP2-BW07+RB2-BE10❖ = RCP2-BW3●7❖
 RP2-BW3●+RP2-BWD07+RB2-BE10❖ = RCP2-BWD3●7❖
 RP2-BWL3●+RP2-BWN06●+RB2-BE10❖ = RCP2-BWN3●6❖
 RP2-BWL3●+RP2-BWL7●+RB2-BE10❖ = RCP2-BWL3●7❖
 RP2-BW1●+RP2-BW06+RB2-BE10❖ = RCP2-BW1●6❖
 RP2-BW1●+RP2-BW07+RB2-BE10❖ = RCP2-BW1●7❖
 RP2-BW1●+RP2-BWD07+RB2-BE10❖ = RCP2-BWD1●7❖
 RP2-BWL1●+RP2-BWN06●+RB2-BE10❖ = RCP2-BWN3●6❖
 RP2-BWL1●+RP2-BWL7●+RB2-BE10❖ = RCP2-BWL3●7❖



RCP7-IVL-7●

- Replace '❖' with codes for type of contacts (See page F-18) & '●' with colour codes (See page F-16 & F-17)
- For illuminated push button heads, refer page F-16
- For pilot lamp head, refer page F-17