

Control & Signalling Units ϕ 22.5mm Metal

Assemblies for Illuminated, Non-Illuminated type Push Buttons & Selector Switches (Type RB2-B)



RB2-BZ101

Body assemblies with fixing collar & contact blocks (screw clamp terminal connections)

Description	Contact	Type	Reference
For Push Buttons, Selector and Key Switches	NO	Standard	RB2-BZ101
	NC	Standard	RB2-BZ102
	NO+NO	Standard	RB2-BZ103
	NC+NC	Standard	RB2-BZ104
	NO+NC	Standard	RB2-BZ105
	NO	Gold Flash	RB2-BZ1016
	NC	Gold Flash	RB2-BZ1026
	NO+NO	Gold Flash	RB2-BZ1036
	NC+NC	Gold Flash	RB2-BZ1046
	NO+NC	Gold Flash	RB2-BZ1056

Additional / Replacement Contact Blocks

Description	Contact	Type	Reference
For making up Body Assemblies with 3, 4, 5 or Maximum of 6 Contact Blocks or Replacing 1 st OR 2 nd Contact	NO	Standard	RB2-BE101
	NC	Standard	RB2-BE102
	NO	Gold Flash	RB2-BE1016
	NC	Gold Flash	RB2-BE1026



RB2-BE101

Body assemblies for illuminated Push Buttons & Selectors with or w/o Contacts

Description	Supply Voltage	Contact	Colour	Reference	
Direct BA 9s Filament Bulb* Supplied	12V / 24V / 48V / 110V / 130V (AC)(DC) \circ	NO + NC		RB2-BW065■	
		W/O Contact Blocks		RB2-BW06■	
Through Resistor BA 9s, 130V Filament Bulb Supplied	220V (AC)(DC)	NO + NC		RB2-BW075	
		W/O Contact Blocks		RB2-BW07	
Through Resistor & Diode BA 9s 130V Bulb Supplied	240V (AC)	NO + NC		RB2-BWD075	
		W/O Contact Blocks		RB2-BWD07	
Direct BA 9s Neon Bulb Supplied	220V / 380V / 415V (AC)(DC)	NO + NC	● Green	RB2-BWN0635■	
			Natural	RB2-BWN0655■	
		W/O Contact Blocks	● Green	RB2-BWN063■	
			Natural	RB2-BWN065■	
With Integral Circuit & Cluster LED	12V, 24V, 48V (AC)(DC) 110VAC, 110VDC 240V (AC) 220V (DC)	NO + NC	○ White	RB2-BWL715■	
			● Green	RB2-BWL735■	
			● Red	RB2-BWL745■	
			● Amber	RB2-BWL755■	
			● Blue	RB2-BWL765■	
			Clear	RB2-BWL775■	
			● Yellow	RB2-BWL785■	
			W/O Contact Blocks	○ White	RB2-BWL71■
				● Green	RB2-BWL73■
				● Red	RB2-BWL74■
		● Amber		RB2-BWL75■	
				● Blue	RB2-BWL76■
				Clear	RB2-BWL77■
				● Yellow	RB2-BWL78■



RB2-BW06



RB2-BWL7

- \circ Body assemblies (suitable for bulb 2.6W max.) upto 230V max. available without bulb
- * Bulb rating 12V to 130V, 2.6W (max.);
- For accessories refer page F8 & F9
- ■ Please mention voltage while ordering
- For complete assemblies refer page F10 & F11

Control & Signalling Units ϕ 22.5mm Metal

Characteristics

General Characteristics

Products	Push Buttons, Selector Switches, Key Selector Switches, Latching Mushroom Head Push Buttons, Pilot Lights & Illuminated Push Buttons
Reference Standard	IEC 60947-5-1, EN 60947-5-1, IEC 337-1, UL 508, CSA C-22-2 n° 14
Approval	UL, cUL, CSA, CE
Protection Degree	IP 65 / IP 66 according to IEC 60947-1;
Pollution Degree	3
Temperature	-40°C ~ + 70°C (Storage) -25°C ~ + 70°C (Working)
Vibration Resistance	\varnothing 60mm Mushroom Head Push Buttons: 8g, Other Push Buttons & Pilot Lights: 15g (40Hz<frequency<500 Hz) conforming to IEC 68-2-6
Shock Resistance	Push Buttons : 70g, Mushroom Head Push Buttons: 15g, Selector Switches : 200g conforming to IEC 68-2-27
Working Position	All working positions are allowed
Mechanical Life Push Buttons	Push Buttons & Selector Switches 1 million operations, Latching Emergency Mushroom 300,000 operations

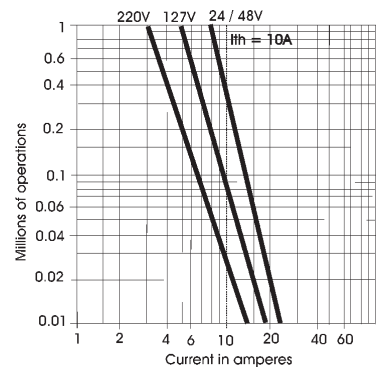
Contact Elements Characteristics

Rated Thermal Current I_{th}	10A
Rated Insulation Voltage U_i	500V conforming to IEC 60947-1, UL 508 & CSA 22-2 n° 14
Insulation Category	Group C conforming to NF C 20-040, VDE 0110
Operating Force	Push Buttons - 1 'NO' = 10N, 1 'NC' = 8N Additional contacts - 'NO' = +5N, 'NC' = +3N
Dielectric Strength	2.5KV for 1 minute
Insulation Resistance	2M Ohm min (500 VDC)
Initial Contact Resistance	< 25 milli Ohm
Short Circuits Protection	10A 500V, Cartridge Fuse g1 or N conforming to IEC 337-1
Cabling/Terminal Capacity	1x0.5mm ²2x1.5mm ²
Contact Operation	Slow action, Positive Opening
Rated Power	Conforming to IEC 60947-5-1; utilization categories AC 15 & DC 13

Standard Contact Blocks

AC Supply (50/60Hz)

∞ Inductive



DC Supply

Power broken in W

For 1 million operations

Voltage	24V	48V	120V
Inductive Load	65W	48W	40W

AC Ratings, Inductive - NEMA A600

35% Power Factor

Volts	Make Amperes	VA	Break Amperes	VA	Continuous carrying Amperes	Resistive 75% Power factor Make, Break & continuous Amperes
120	60	7200	6	720	10	10
240	30	7200	3	720	10	10
480	15	7200	1.5	720	10	10
600	12	7200	1.2	720	10	10

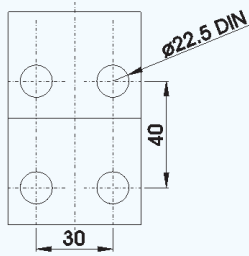
DC Ratings, NEMA Type Q600

Inductive and resistive

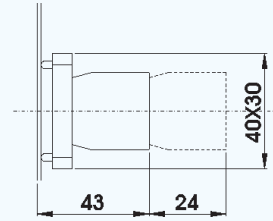
Volts	Make & Break (Amp.)	Continuous (Amp.)
125	0.55	2.5
250	0.27	2.5
600	0.10	2.5

Control & Signalling Units ϕ 22.5mm Metal

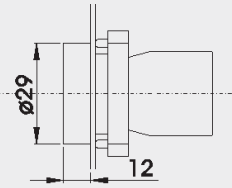
Dimensions / Complete Units' Reference



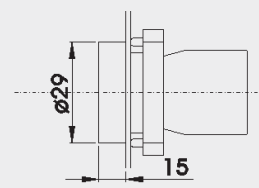
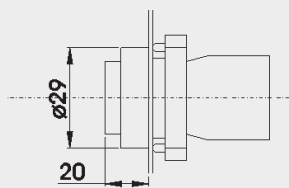
PANEL CUT-OUT
(Thickness: 6mm max.)



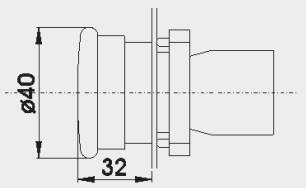
RB2-BE10 \diamond +RB2-B = RCB2-BZ10 \diamond



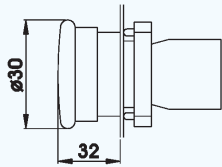
RB2-BA \bullet +RB2-BZ10 \diamond =RCB2-BA \bullet \diamond RB2-BL \bullet +RB2-BZ10 \diamond =RCB2-BL \bullet \diamond
RB2-BA334+RB2-BZ10 \diamond =RCB2-BA334 \diamond



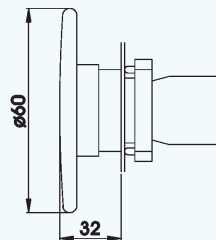
RB2-BP \bullet +RB2-BZ10 \diamond =RCB2-BP \bullet \diamond
RB2-BA \bullet 8+RB2-BZ10 \diamond =RCB2-BA \bullet 8 \diamond



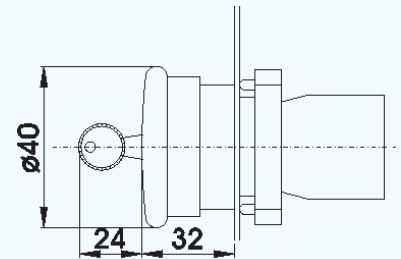
RB2-BC \bullet +RB2-BZ10 \diamond =RCB2-BC \bullet \diamond
RB2-BS54+RB2-BZ10 \diamond =RCB2-BS54 \diamond
RB2-BT4+RB2-BZ10 \diamond =RCB2-BT4 \diamond



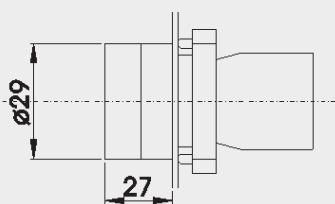
RB2-BS44+RB2-BZ10 \diamond =RCB2-BS44 \diamond



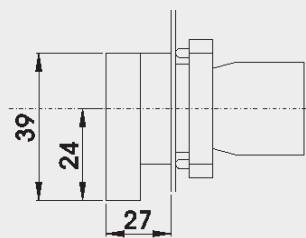
RB2-BR4+RB2-BZ10 \diamond =RCB2-BR4 \diamond
RB2-BS64+RB2-BZ10 \diamond =RCB2-BS64 \diamond



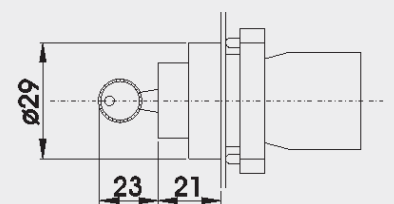
RB2-BS14+RB2-BZ10 \diamond =RCB2-BS14 \diamond



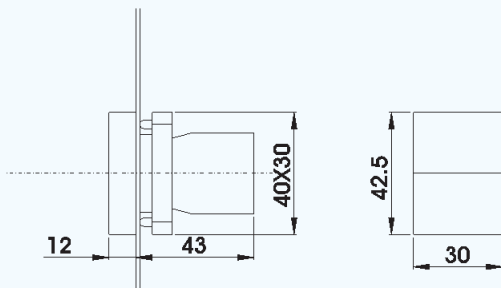
RB2-BD2+RB2-BZ10 \diamond =RCB2-BD2 \diamond
RB2-BD3+RB2-BZ10 \diamond =RCB2-BD3 \diamond



RB2-BJ2+RB2-BZ10 \diamond =RCB2-BJ2 \diamond
RB2-BJ3+RB2-BZ10 \diamond =RCB2-BJ3 \diamond



RB2-BG \diamond +RB2-BZ10 \diamond =RCB2-BG \diamond \diamond
(Replace \diamond with code for position of Key removal & operation pattern)

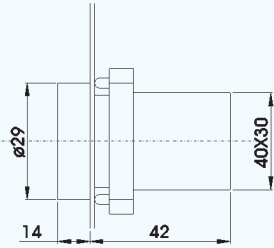


RB2-BA87+RB2-BZ10 \diamond =RCB2-BA87 \diamond

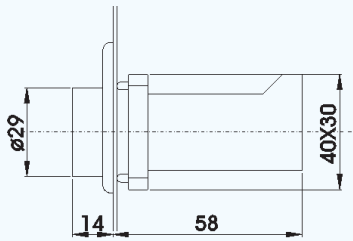
- Replace \diamond with codes for type of contacts (See page F6) & \bullet with colour codes (See page F3 & F4)
- For non-illuminated push button heads, selector switches & key switches, refer page F3 & F4

Control & Signalling Units ϕ 22.5mm Metal

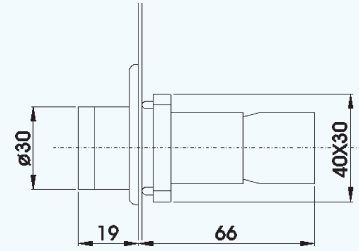
Dimensions / Complete Units' Reference



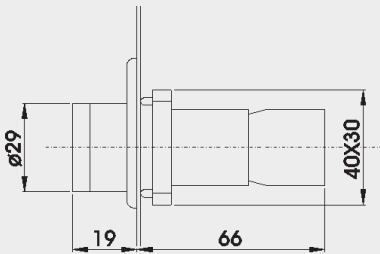
RB2-BV0●+RB2-BV6 = RCB2-BV6●
 RB2-BV0●+RB2-BVN6 = RCB2-BVN6●
 RB2-BV0●+RB2-BV7 = RCB2-BV7●
 RB2-BV0●+RB2-BVD7 = RCB2-BVD7●
 RB2-BVL0●+RB2-BVL7● = RCB2-BVL7●



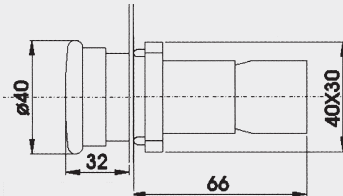
RB2-BV0●+RB2-BV3 = RCB2-BV3●
 RB2-BV0●+RB2-BV4 = RCB2-BV4●



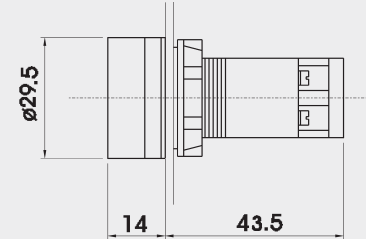
RB2-BW5●+RB2-BW06+RB2-BE10◇ = RCB2-BW5●6◇
 RB2-BW5●+RB2-BW07+RB2-BE10◇ = RCB2-BW5●7◇
 RB2-BW5●+RB2-BWD07+RB2-BE10◇ = RCB2-BWD5●7◇
 RB2-BW5●+RB2-BW06+RB2-BE10◇ = RCB2-BW5●6◇



RB2-BW3●+RB2-BW06+RB2-BE10◇ = RCB2-BW3●6◇
 RB2-BW3●+RB2-BW07+RB2-BE10◇ = RCB2-BW3●7◇
 RB2-BW3●+RB2-BWD07+RB2-BE10◇ = RCB2-BWD3●7◇
 RB2-BWL3●+RB2-BWN06●+RB2-BE10◇ = RCB2-BWN3●6◇
 RB2-BWL3●+RB2-BWL7●+RB2-BE10◇ = RCB2-BWL3●7◇



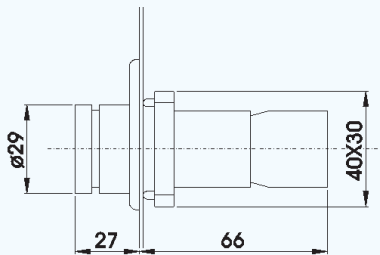
RB2-BW4●+RB2-BW06+RB2-BE10◇ = RCB2-BW4●6◇
 RB2-BW4●+RB2-BW07+RB2-BE10◇ = RCB2-BW4●7◇
 RB2-BW4●+RB2-BWD07+RB2-BE10◇ = RCB2-BWD4●7◇
 RB2-BW4●+RB2-BWN06●+RB2-BE10◇ = RCB2-BWN4●6◇
 RB2-BW4●+RB2-BWL7●+RB2-BE10◇ = RCB2-BWL4●7◇



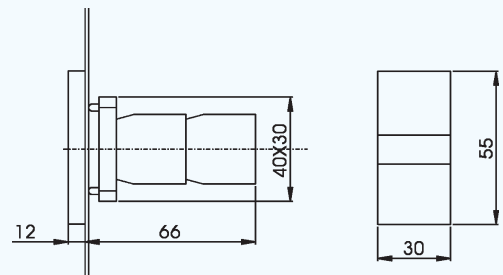
RCB7-IVL-7●

RB2-BW1●+RB2-BW06+RB2-BE10◇ = RCB2-BW1●6◇
 RB2-BW1●+RB2-BW07+RB2-BE10◇ = RCB2-BW1●7◇
 RB2-BW1●+RB2-BWD07+RB2-BE10◇ = RCB2-BWD1●7◇
 RB2-BWL1●+RB2-BWN06●+RB2-BE10◇ = RCB2-BWN1●6◇
 RB2-BWL1●+RB2-BWL7●+RB2-BE10◇ = RCB2-BWL1●7◇

RB2-BW6●+RB2-BW06+RB2-BE10◇ = RCB2-BW6●6◇
 RB2-BW6●+RB2-BW07+RB2-BE10◇ = RCB2-BW6●7◇
 RB2-BW6●+RB2-BWD07+RB2-BE10◇ = RCB2-BWD6●7◇
 RB2-BW6●+RB2-BWN06●+RB2-BE10◇ = RCB2-BWN6●6◇
 RB2-BW6●+RB2-BWL7●+RB2-BE10◇ = RCB2-BWL6●7◇



RB2-BK12●+RB2-BW06+RB2-BE10◇ = RCB2-BK12●6◇
 RB2-BK12●+RB2-BW07+RB2-BE10◇ = RCB2-BK12●7◇
 RB2-BK12●+RB2-BWD07+RB2-BE10◇ = RCB2-BKD12●7◇
 RB2-BK13●+RB2-BW06+RB2-BE10◇ = RCB2-BK13●6◇
 RB2-BK13●+RB2-BW07+RB2-BE10◇ = RCB2-BK13●7◇
 RB2-BK13●+RB2-BWD07+RB2-BE10◇ = RCB2-BKD13●7◇



RB2-BW9+RB2-BW06+RB2-BE10◇ = RCB2-BW96◇
 RB2-BW9+RB2-BW07+RB2-BE10◇ = RCB2-BW97◇
 RB2-BW9+RB2-BWD07+RB2-BE10◇ = RCB2-BWD97◇
 RB2-BW9+RB2-BWN065+RB2-BE10◇ = RCB2-BWN965◇
 RB2-BW9+RB2-BWL75+RB2-BE10◇ = RCB2-BWL975◇

- Replace '◇' with codes for type of contacts (See page F6) & '●' with colour codes (see page F3 & F4)
- For illuminated push button heads, illuminated selector switches, refer page F5
- For pilot lamp head, refer page F7 & for double headed push button with pilot lamp, refer page F4