

Control & Signalling Units ϕ 22.5mm Metal

Non-Illuminated Push Buttons (Type RB2-B)

(Control Units with chromium plated metal bezel)

Operating Heads for Push Buttons, Spring Return - IP65



RB2-BA4



RB2-BA16



RB2-BL4



RB2-BP4



RB2-BA48



RB2-BS14



RB2-BT43



RB2-BA334 /

Description	Knob Size	Colour			
Flush Push Button Spring Return		○ White	RB2-BA1		
		● Black	RB2-BA2		
		● Green	RB2-BA3		
		● Red	RB2-BA4		
		● Yellow	RB2-BA5		
		● Blue	RB2-BA6		
		↑ Black Arrow on White base	RB2-BA334		
		⬇ White Arrow on Black base	RB2-BA335		
Recess (Guarded) Push Button		○ White	RB2-BA16		
		● Black	RB2-BA26		
		● Green	RB2-BA36		
		● Red	RB2-BA46		
		● Yellow	RB2-BA56		
		● Blue	RB2-BA66		
		Projecting Push Button Spring Return		○ White	RB2-BL1
				● Black	RB2-BL2
● Green	RB2-BL3				
● Red	RB2-BL4				
● Yellow	RB2-BL5				
● Blue	RB2-BL6				
Booted Push Button Spring Return IP66				○ White	RB2-BP1
				● Black	RB2-BP2
		● Green	RB2-BP3		
		● Red	RB2-BP4		
		● Yellow	RB2-BP5		
		● Blue	RB2-BP6		
		Flush Push Button Spring Return with Transparent Boot IP66		○ White	RB2-BA18
● Black	RB2-BA28				
● Green	RB2-BA38				
● Red	RB2-BA48				
● Yellow	RB2-BA58				
● Blue	RB2-BA68				
Mushroom Head Push Button Spring Return				● Black	RB2-BC2
				● Green	RB2-BC3
		● Red	RB2-BC4		
		● Yellow	RB2-BC5		
		● Blue	RB2-BC6		
		● Red	RB2-BR4		
		Mushroom Head Push Button Turn to Release	ϕ 40mm	● Red	RB2-BS44
ϕ 30mm	● Red		RB2-BS54		
ϕ 60mm	● Red		RB2-BS64		
Mushroom Head Push Button Key Release - Key No. 455	ϕ 40mm	● Red	RB2-BS14		
Mushroom Head Push Button	ϕ 40mm	● Red (Pre Marked)	RB2-BT4		
Push to Stay and Pull to Release		● Red	RB2-BT43		

Operating Heads with Black metal bezel

TO Order add Suffix '7' to above e.g. RB2-BA334 Becomes RB2-BA3347

- For legend plates refer page F9
- For accessories refer page F8 & F9
- For body / contact assemblies refer page F6
- For complete assemblies refer page F10 & F11

Control & Signalling Units ϕ 22.5mm Metal

Characteristics

General Characteristics

Products	Push Buttons, Selector Switches, Key Selector Switches, Latching Mushroom Head Push Buttons, Pilot Lights & Illuminated Push Buttons
Reference Standard	IEC 60947-5-1, EN 60947-5-1, IEC 337-1, UL 508, CSA C-22-2 n° 14
Approval	UL, cUL, CSA, CE
Protection Degree	IP 65 / IP 66 according to IEC 60947-1;
Pollution Degree	3
Temperature	-40°C ~ + 70°C (Storage) -25°C ~ + 70°C (Working)
Vibration Resistance	Ø60mm Mushroom Head Push Buttons: 8g, Other Push Buttons & Pilot Lights: 15g (40Hz<frequency<500 Hz) conforming to IEC 68-2-6
Shock Resistance	Push Buttons : 70g, Mushroom Head Push Buttons: 15g, Selector Switches : 200g conforming to IEC 68-2-27
Working Position	All working positions are allowed
Mechanical Life Push Buttons	Push Buttons & Selector Switches 1 million operations, Latching Emergency Mushroom 300,000 operations

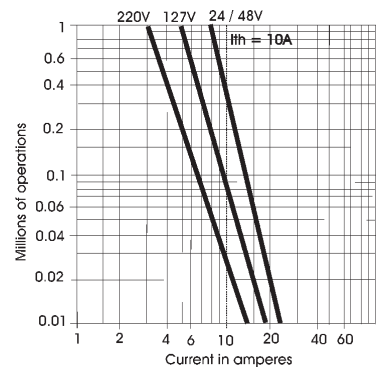
Contact Elements Characteristics

Rated Thermal Current I_{th}	10A
Rated Insulation Voltage U_i	500V conforming to IEC 60947-1, UL 508 & CSA 22-2 n° 14
Insulation Category	Group C conforming to NF C 20-040, VDE 0110
Operating Force	Push Buttons - 1 'NO' = 10N, 1 'NC' = 8N Additional contacts - 'NO' = +5N, 'NC' = +3N
Dielectric Strength	2.5KV for 1 minute
Insulation Resistance	2M Ohm min (500 VDC)
Initial Contact Resistance	< 25 milli Ohm
Short Circuits Protection	10A 500V, Cartridge Fuse g1 or N conforming to IEC 337-1
Cabling/Terminal Capacity	1x0.5mm ²2x1.5mm ²
Contact Operation	Slow action, Positive Opening
Rated Power	Conforming to IEC 60947-5-1; utilization categories AC 15 & DC 13

Standard Contact Blocks

AC Supply (50/60Hz)

∞ Inductive



DC Supply

Power broken in W

For 1 million operations

Voltage	24V	48V	120V
Inductive Load	65W	48W	40W

AC Ratings, Inductive - NEMA A600

35% Power Factor

Volts	Make Amperes	VA	Break Amperes	VA	Continuous carrying Amperes	Resistive 75% Power factor Make, Break & continuous Amperes
120	60	7200	6	720	10	10
240	30	7200	3	720	10	10
480	15	7200	1.5	720	10	10
600	12	7200	1.2	720	10	10

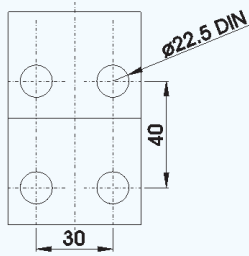
DC Ratings, NEMA Type Q600

Inductive and resistive

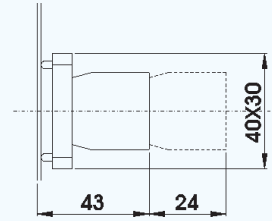
Volts	Make & Break (Amp.)	Continuous (Amp.)
125	0.55	2.5
250	0.27	2.5
600	0.10	2.5

Control & Signalling Units ϕ 22.5mm Metal

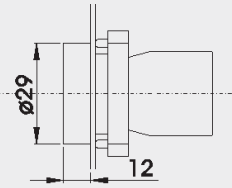
Dimensions / Complete Units' Reference



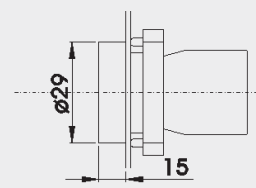
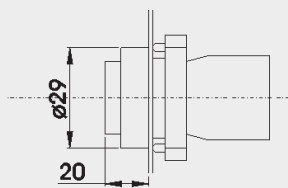
PANEL CUT-OUT
(Thickness: 6mm max.)



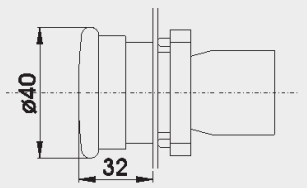
RB2-BE10 \diamond +RB2-B = RCB2-BZ10 \diamond



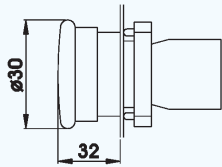
RB2-BA \bullet +RB2-BZ10 \diamond =RCB2-BA \bullet \diamond RB2-BL \bullet +RB2-BZ10 \diamond =RCB2-BL \bullet \diamond
RB2-BA334+RB2-BZ10 \diamond =RCB2-BA334 \diamond



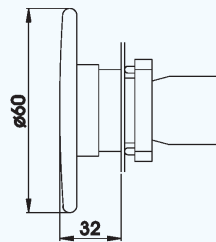
RB2-BP \bullet +RB2-BZ10 \diamond =RCB2-BP \bullet \diamond
RB2-BA \bullet 8+RB2-BZ10 \diamond =RCB2-BA \bullet 8 \diamond



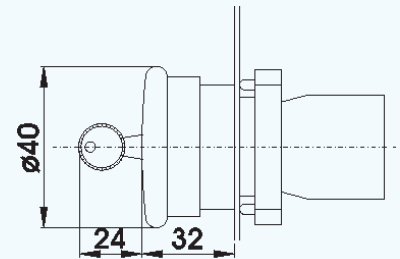
RB2-BC \bullet +RB2-BZ10 \diamond =RCB2-BC \bullet \diamond
RB2-BS54+RB2-BZ10 \diamond =RCB2-BS54 \diamond
RB2-BT4+RB2-BZ10 \diamond =RCB2-BT4 \diamond



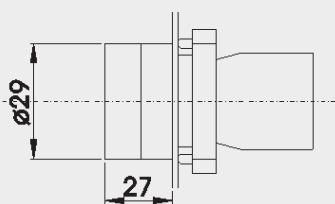
RB2-BS44+RB2-BZ10 \diamond =RCB2-BS44 \diamond



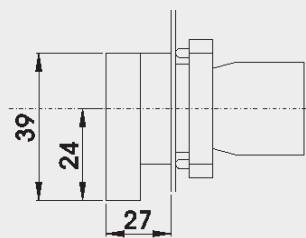
RB2-BR4+RB2-BZ10 \diamond =RCB2-BR4 \diamond
RB2-BS64+RB2-BZ10 \diamond =RCB2-BS64 \diamond



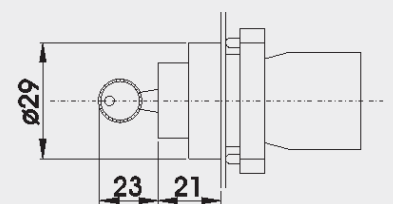
RB2-BS14+RB2-BZ10 \diamond =RCB2-BS14 \diamond



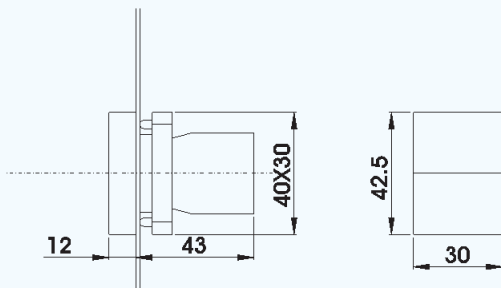
RB2-BD2+RB2-BZ10 \diamond =RCB2-BD2 \diamond
RB2-BD3+RB2-BZ10 \diamond =RCB2-BD3 \diamond



RB2-BJ2+RB2-BZ10 \diamond =RCB2-BJ2 \diamond
RB2-BJ3+RB2-BZ10 \diamond =RCB2-BJ3 \diamond



RB2-BG \diamond +RB2-BZ10 \diamond =RCB2-BG \diamond \diamond
(Replace \diamond with code for position of Key removal & operation pattern)

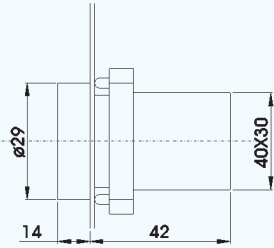


RB2-BA87+RB2-BZ10 \diamond =RCB2-BA87 \diamond

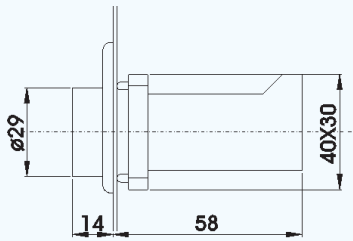
- Replace \diamond with codes for type of contacts (See page F6) & \bullet with colour codes (See page F3 & F4)
- For non-illuminated push button heads, selector switches & key switches, refer page F3 & F4

Control & Signalling Units ϕ 22.5mm Metal

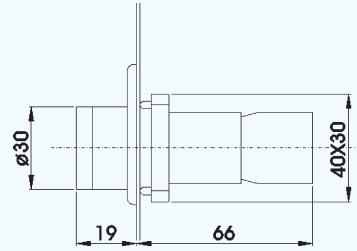
Dimensions / Complete Units' Reference



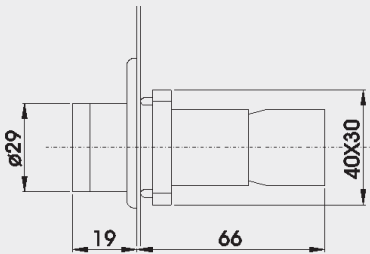
RB2-BV0●+RB2-BV6 = RCB2-BV6●
 RB2-BV0●+RB2-BVN6 = RCB2-BVN6●
 RB2-BV0●+RB2-BV7 = RCB2-BV7●
 RB2-BV0●+RB2-BVD7 = RCB2-BVD7●
 RB2-BVL0●+RB2-BVL7● = RCB2-BVL7●



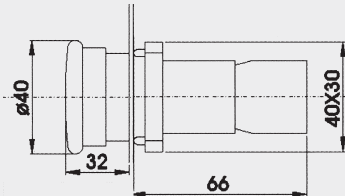
RB2-BV0●+RB2-BV3 = RCB2-BV3●
 RB2-BV0●+RB2-BV4 = RCB2-BV4●



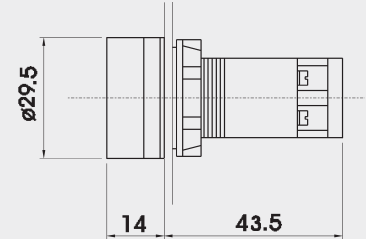
RB2-BW5●+RB2-BW06+RB2-BE10❖ = RCB2-BW5●6❖
 RB2-BW5●+RB2-BW07+RB2-BE10❖ = RCB2-BW5●7❖
 RB2-BW5●+RB2-BWD07+RB2-BE10❖ = RCB2-BWD5●7❖
 RB2-BW5●+RB2-BW06+RB2-BE10❖ = RCB2-BW5●6❖



RB2-BW3●+RB2-BW06+RB2-BE10❖ = RCB2-BW3●6❖
 RB2-BW3●+RB2-BW07+RB2-BE10❖ = RCB2-BW3●7❖
 RB2-BW3●+RB2-BWD07+RB2-BE10❖ = RCB2-BWD3●7❖
 RB2-BWL3●+RB2-BWN06●+RB2-BE10❖ = RCB2-BWN3●6❖
 RB2-BWL3●+RB2-BWL7●+RB2-BE10❖ = RCB2-BWL3●7❖



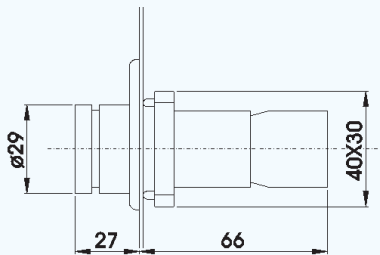
RB2-BW4●+RB2-BW06+RB2-BE10❖ = RCB2-BW4●6❖
 RB2-BW4●+RB2-BW07+RB2-BE10❖ = RCB2-BW4●7❖
 RB2-BW4●+RB2-BWD07+RB2-BE10❖ = RCB2-BWD4●7❖
 RB2-BW4●+RB2-BWN06●+RB2-BE10❖ = RCB2-BWN4●6❖
 RB2-BW4●+RB2-BWL7●+RB2-BE10❖ = RCB2-BWL4●7❖



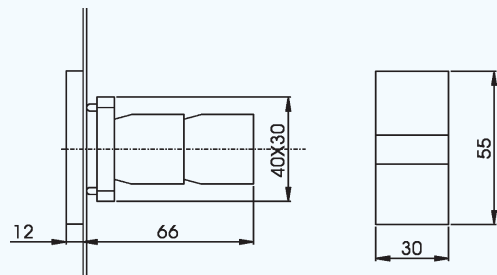
RCB7-IVL-7●

RB2-BW1●+RB2-BW06+RB2-BE10❖ = RCB2-BW1●6❖
 RB2-BW1●+RB2-BW07+RB2-BE10❖ = RCB2-BW1●7❖
 RB2-BW1●+RB2-BWD07+RB2-BE10❖ = RCB2-BWD1●7❖
 RB2-BWL1●+RB2-BWN06●+RB2-BE10❖ = RCB2-BWN1●6❖
 RB2-BWL1●+RB2-BWL7●+RB2-BE10❖ = RCB2-BWL1●7❖

RB2-BW6●+RB2-BW06+RB2-BE10❖ = RCB2-BW6●6❖
 RB2-BW6●+RB2-BW07+RB2-BE10❖ = RCB2-BW6●7❖
 RB2-BW6●+RB2-BWD07+RB2-BE10❖ = RCB2-BWD6●7❖
 RB2-BW6●+RB2-BWN06●+RB2-BE10❖ = RCB2-BWN6●6❖
 RB2-BW6●+RB2-BWL7●+RB2-BE10❖ = RCB2-BWL6●7❖



RB2-BK12●+RB2-BW06+RB2-BE10❖ = RCB2-BK12●6❖
 RB2-BK12●+RB2-BW07+RB2-BE10❖ = RCB2-BK12●7❖
 RB2-BK12●+RB2-BWD07+RB2-BE10❖ = RCB2-BKD12●7❖
 RB2-BK13●+RB2-BW06+RB2-BE10❖ = RCB2-BK13●6❖
 RB2-BK13●+RB2-BW07+RB2-BE10❖ = RCB2-BK13●7❖
 RB2-BK13●+RB2-BWD07+RB2-BE10❖ = RCB2-BKD13●7❖



RB2-BW9+RB2-BW06+RB2-BE10❖ = RCB2-BW96❖
 RB2-BW9+RB2-BW07+RB2-BE10❖ = RCB2-BW97❖
 RB2-BW9+RB2-BWD07+RB2-BE10❖ = RCB2-BWD97❖
 RB2-BW9+RB2-BWN065+RB2-BE10❖ = RCB2-BWN965❖
 RB2-BW9+RB2-BWL75+RB2-BE10❖ = RCB2-BWL975❖

- Replace '❖' with codes for type of contacts (See page F6) & '●' with colour codes (see page F3 & F4)
- For illuminated push button heads, illuminated selector switches, refer page F5
- For pilot lamp head, refer page F7 & for double headed push button with pilot lamp, refer page F4